

VACATION CARE PROGRAM – April 2022

Emu Village – 4 Lawson Street EMU PLAINS

MONDAY 11 April

INCURSION

AM – Earth Beats: ANZAC

A unique and engaging ANZAC Day experience with cultural songs, dances, games & activities
10:00am to 11:30am

PM – ANZAC Arts & Crafts

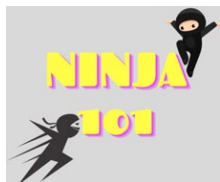


TUESDAY 12 April

EXCURSION

Ninja 101

Test out your Ninja skills, in a Ninja Warrior style obstacle course
11:00am – 1:00pm



WEDNESDAY 13 April

INCURSION

AM – Kotahi Tourism

Join us for an immersion in Māori culture with stories, the Haka & music
10:30am – 12:00pm

PM – Māori cooking art & craft



THURSDAY 14 April

CENTRE DAY

Easter Eggs-traveganza
Full day of Easter arts and Crafts & Scavenger and Egg Hunt to finish of the day



FRIDAY 15 April

PUBLIC HOLIDAY

Centre Closed



MONDAY 18 April

PUBLIC HOLIDAY

Centre Closed



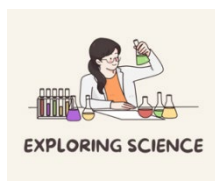
TUESDAY 19 April

INCURSION

AM – Kaleidoscope Science

Explore science in a fun workshop filled with excitement and chemical reactions
10:00am to 11:30am

PM – Make your own Bath Bombs



WEDNESDAY 20 April

EXCURSION

Emu Plains Roller Skatel

Get out those roller skates and challenge your peers to races or roll along at a leisurely pace

10:00am to 2:00pm



THURSDAY 21 April

CENTRE DAY

Movie & PJ Day

Come along in your favourite PJS or onesie for to enjoy movies & snacks



FRIDAY 22 April

INCURSION

AM – Tie Dye

A pair of socks will be waiting for you to create your own fun designs

PM – Middle Years Mentoring Team Sports Program

1:00pm to 3:00pm



CHILDREN'S SERVICES
PENRITH CITY COUNCIL

Please bring a hat, refillable drink bottle, meals and snacks and wear enclosed shoes
Phone 4732 7844 or email csclercial@penrith.city

penrith.city

VACATION CARE PROGRAM – April 2022

Emu Village – 4 Lawson Street EMU PLAINS

MONDAY 25 April

PUBLIC HOLIDAY

Centre Closed



TUESDAY 26 April

CENTRE DAY

Dress Up Day

Come along in your best dress up costume for a day of creative and imaginative play



WEDNESDAY 27 April

FIRST DAY OF TERM 2

Centre is open for before school care (6.30am to 9am) and after school care (3pm to 6.30pm)



**CHILDREN'S
SERVICES
PENRITH
CITY COUNCIL**

Please bring a hat, refillable drink bottle, meals and snacks and wear enclosed shoes
Phone 4732 7844 or email csclerical@penrith.city

penrith.city